



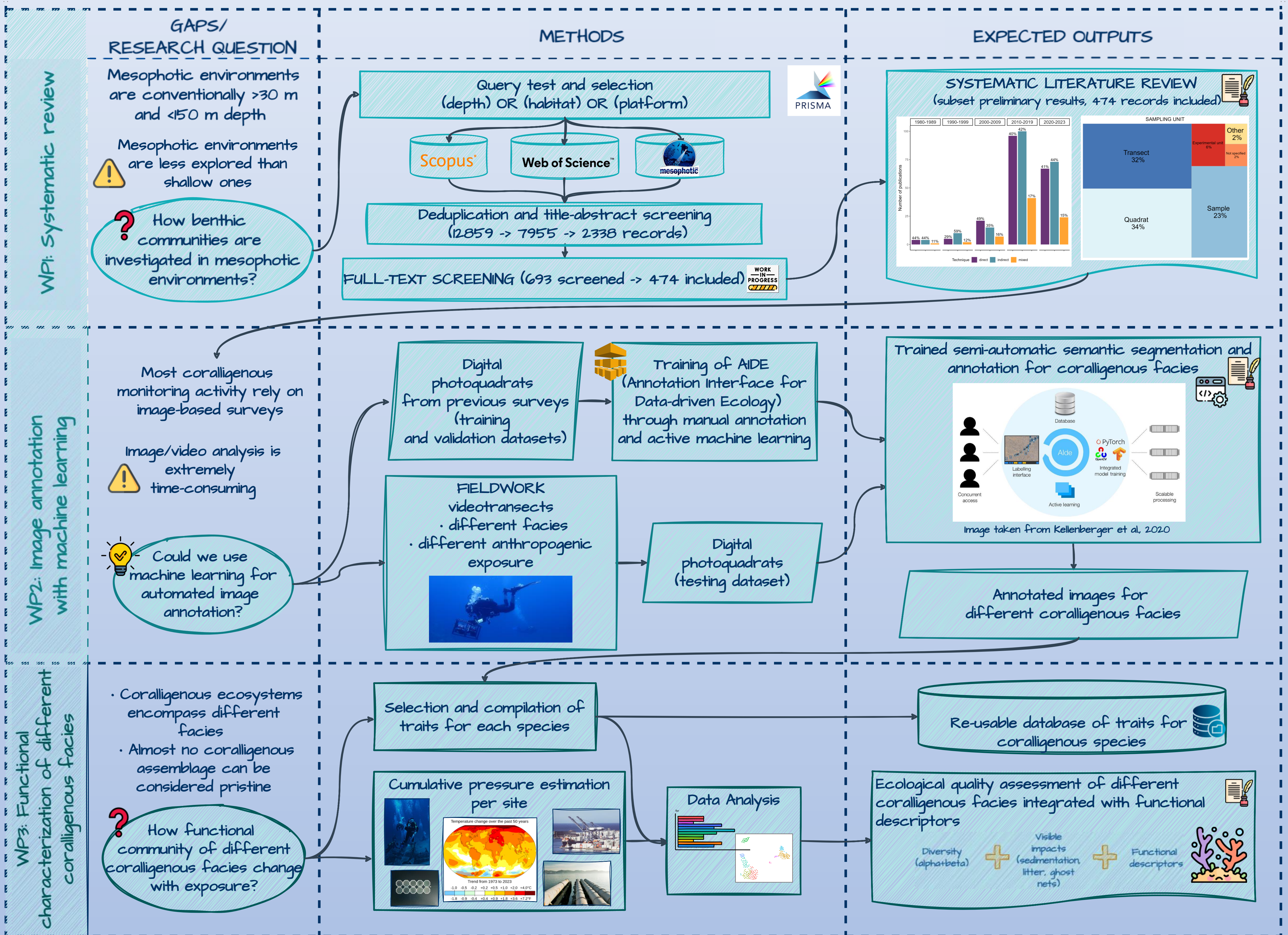
Integrating new approaches in the ecological status assessment of coralligenous communities

Claudia Campanini

DiSVA, Laboratorio Zoologia Marina

Tutor: Prof. Carlo Cerrano

PHD FLOWCHART



PhD development plan

| | Year 1 | | | | Year 2 | | | | Year 3 | | | |
|-------------|----------------|-----------|------------------------------|----|--------|----|----|----|---------------|---|--------------|--------------|
| | Q1 | Q2 | Q3 | Q4 | Q1 | Q2 | Q3 | Q4 | Q1 | Q2 | Q3 | Q4 |
| WP 1 | Identification | Screening | | | | | | | Data analysis | Writing | | |
| WP 2 | | | Manual annotation + training | | | | | | Fieldwork | Automated annotation validation and testing | Code release | Writing |
| WP 3 | | | Species traits database | | | | | | | Data analysis | Writing | |
| | | | | | | | | | | | | DISSERTATION |

Upcoming publications

Not related to the PhD

- Campanini, C. and Gösser, F. et al. 'Observer-based and eDNA metabarcoding techniques to survey reefs exposed to different levels of anthropogenic pressure around Okinawa, Japan'. - in progress, target journal: Coral Reefs
- Roveta, C., Pulido-Mantas, T., Calcinaì, B., Campanini, C., Coppari, M., Falco, P., Di Camillo, C.G., Garrabou, J., Lee, M.C., Memmola, F., Cerrano, C. Mesophotic zone as buffer for biodiversity protection: a promising opportunity to enhance MPA effectiveness. - under revision, Marine Environmental Research

